

Let Kamikawa Satisfy Your Curiosity

KAMIKAWA



Nature

The beauty each season brings makes sightseeing a year round activity. Stand amongst the tall silver grass in Tonomine Kogen during the autumn season. Visit the frozen water falls of Henmyo in winter, and relish the spring with its blooming color. Summer welcomes the gorgeous Baikamo, water buttercup and the illumination of fireflies at dusk.



Food & Shopping

The shopping area is filled with old houses that have been restored, and now serve as shops and restaurants. You can find local cuisine such as Mugitoro (steamed barley topped with ground Japanese yam) and Yuzu citrus along with other regional offerings.

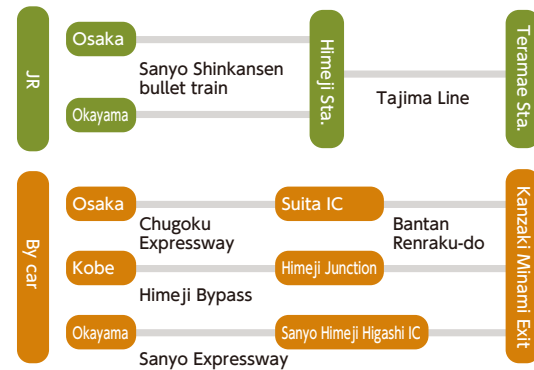


History

History abounds in Kamikawa. Let one of our volunteer tour guides take you to important sights such as the Fukumoto residence, Teshin-ji temple and Horaku-ji temple, famous for the tales of Banshu Inu-dera temple.



Access to Kamikawa



Contact Information

**Kamikawa-cho Town Hall
Regional Development Section**
64 Taramae Kamikawa-cho Kanzaki-gun Hyogo Pref.
Zip: 679-3116
TEL: 81-790-34-0971 FAX: 81-790-34-0691
<https://www.town.kamikawa.hyogo.jp>

Karmin Tourist Information
142-47 Kaji Kamikawa-cho Kanzaki-gun Hyogo Pref.
Zip: 679-3112
TEL: 81-790-34-1001 FAX: 81-790-34-0777
<http://www.kamikawa-kankonavi.jp/>



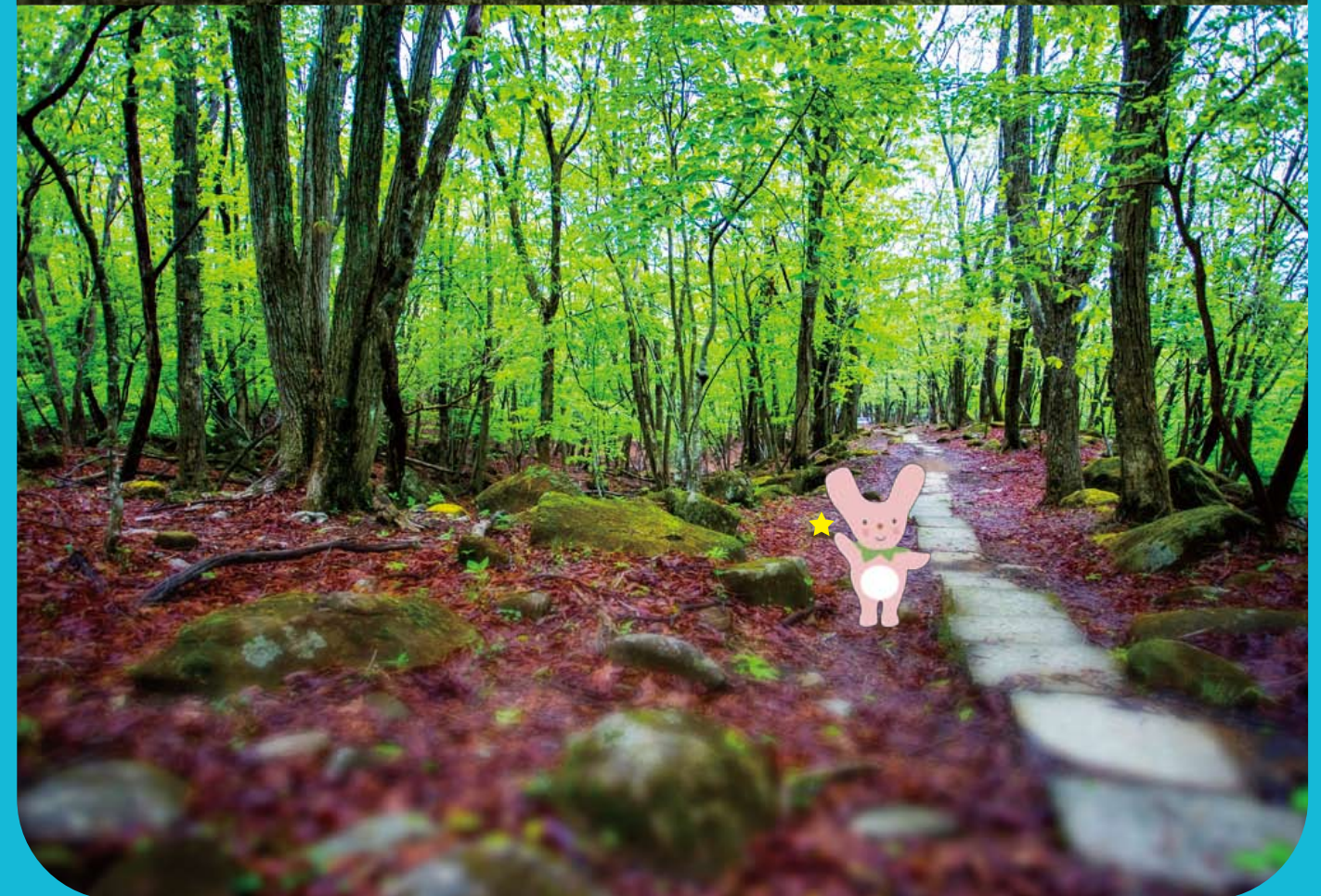
Mascot of
Kamikawa-cho
Karmin

Additional
Kamikawa
information can
be found
here!



KAMIKAWA RESORT

Surround yourself with a pristine forest,
clear babbling brooks and beautiful stars at night.



Kamikawa-cho Sightseeing map

KOGEN HIGHLAND RESORT

Our gorgeous highland area is filled with stars at night. Make a wish, and your dream may come true.

The Tonomine Kogen and Mineyama Kogen highlands are famously known as the backdrop for the movie "Norwegian Wood". A gorgeous forest and layers of stars that line the sky give you a tranquil feeling.

Tonomine Kogen Highland

One of the highlights of the Tonomine Kogen area is the Japanese silver grass which covers approximately 90ha. It has a feathery appearance and changes color from green in the summer to a warm golden color during the autumn.

- 801 Kawakami Kamikawa-cho
Tel: 81-790-31-8100
(Tonomine Nature Hall)
- Discover the area on your own

EL Village Ookawachi

Visit the PR Institute of Kansai Electric Power Co., LTD Ookawachi Power Station, where you can learn about how hydraulic power is generated. Take an impressive tour of the power plant, located 280m below ground level.

- 34-1 Aza Nitta Hase Kamikawa-cho
Tel: 81-790-35-0888
Open: 10:00 - 17:30
Closed: Monday & Tuesday

Mineyama Kogen Hotel Reluxia

Stroll through an awe inspiring forest where a movie was filmed, or soak yourself in an outdoor bath under the twinkling stars. Satisfy your appetite with a mix of Japanese and Western cuisine prepared with the freshest local ingredients.

- 881-146 Kami Oda Kamikawa-cho
Tel: 81-790-34-1516

As seen in TV dramas and movies

A scene from the NHK TV drama "Taiga no Kiyomori" (a Samurai warrior during the Heian Era) was filmed here.

KAMIKAWA

Heart-shaped



Hotel Monte Rosa

A beautiful resort hotel that offers dining and a spa for hotel guests and visitors.

- 987 Nagaya Kamikawa-cho
Tel: 81-790-35-0777
Closed: Monday



Oka-en

Be amazed by the 3,000 cherry trees and 240 different species from around the world.

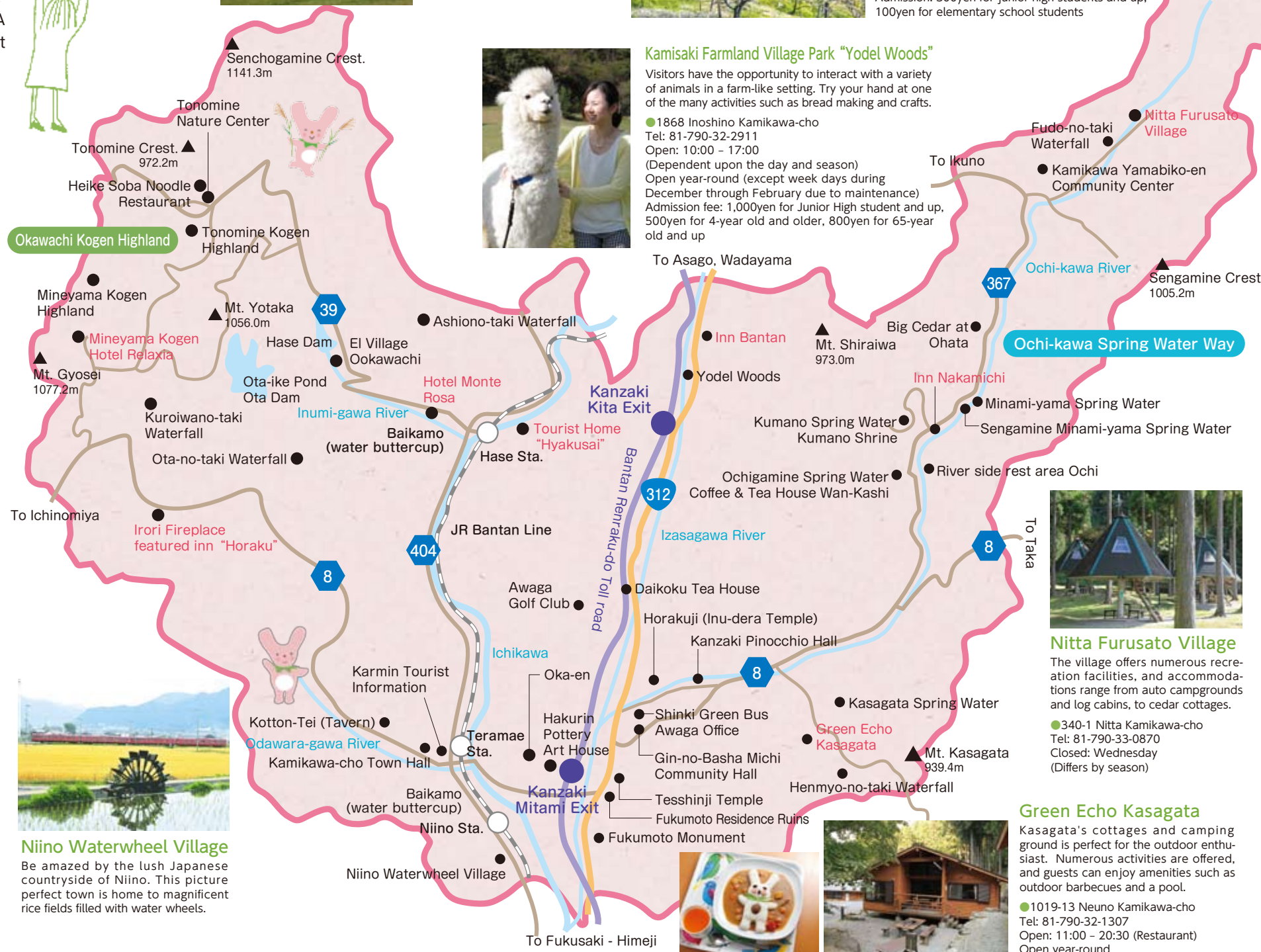
- 146 Higashi Kashiwao Kamikawa-cho
Tel: 81-790-32-2299 (Oka-en Management Association)
Open from the middle of March through the beginning of May
Admission: 300yen for junior high students and up, 100yen for elementary school students



Kamisaki Farmland Village Park "Yodel Woods"

Visitors have the opportunity to interact with a variety of animals in a farm-like setting. Try your hand at one of the many activities such as bread making and crafts.

- 1868 Inoshino Kamikawa-cho
Tel: 81-790-32-2911
Open: 10:00 - 17:00
(Dependent upon the day and season)
Open year-round (except week days during December through February due to maintenance)
Admission fee: 1,000yen for Junior High student and up, 500yen for 4-year old and older, 800yen for 65-year old and up



Niino Waterwheel Village

Be amazed by the lush Japanese countryside of Niino. This picture perfect town is home to magnificent rice fields filled with water wheels.

Feel a cool breeze as you bicycle down the Meisui (spring water) road.

The Ochigawa river region is home to 4 natural springs and is surrounded by an abundance of natural beauty. The area offers an array of impressive activities, so gather your friends and family to hike, bike and camp.



Cycling down Ochigawa Meisui road

Take a bus up to the top and bicycle down 20km until you reach the springs!

- 39-1 Nakamura Kamikawa-cho
Tel: 81-790-32-1021
(Shinko Green Bus Awaga office)
* Available from April 1st to Nov 30th
Fee: 1,600yen for adults, 1,200yen for children
(Reservations are required)

Kanzaki Pinocchio Hall

A statue of Pinocchio carved out of wood welcomes you. Experience a woodworking class and learn at your own pace.

- 30-1 Yamada Kamikawa-cho
Tel: 81-790-32-1796
Open: 9:00 - 16:30
Closed: Tuesday
(Year-end & new-year period)

Coffee & Tea House Wan-Kashi

Coffee & Tea House Wan-Kashi is located next to the Ochigamine spring. Smell the rich aroma and taste a delicious cup of organic coffee siphon brewed with natural spring water.

- 48-17 Ochi Kamikawa-cho
Tel: 81-790-33-0328
Open: 9:00 - 17:00
Closed: Thursday

Nitta Furusato Village

The village offers numerous recreation facilities, and accommodations range from auto campgrounds and log cabins, to cedar cottages.

- 340-1 Nitta Kamikawa-cho
Tel: 81-790-33-0870
Closed: Wednesday
(Differs by season)

Green Echo Kasagata

Kasagata's cottages and camping ground is perfect for the outdoor enthusiast. Numerous activities are offered, and guests can enjoy amenities such as outdoor barbecues and a pool.

- 1019-13 Neuno Kamikawa-cho
Tel: 81-790-32-1307
Open: 11:00 - 20:30 (Restaurant)
Open year-round